



5 Robin Close, Sundorne Grove, Shrewsbury, SY1 4TX

2 bedroom end terrace — £190,000 Freehold

5 Robin Close, Sundorne Grove, Shrewsbury, SY1 4TX

£190,000 Freehold — 2 bedroom end terrace

sales@cgpooks.co.uk

Occupying a lovely position within a quiet cul-de-sac, this neatly presented end of terrace house offers very practical and well-designed accommodation, while benefitting from a private driveway and generous rear garden.

KEY FEATURES

- Entrance hall opening to a good sized living room with under stairs storage and window to front
- Open plan kitchen/dining room, which has previously been reconfigured to accommodate a dining table, with a range of well-fitted units, space for appliances and access to the rear garden
- Master bedroom with built in wardrobes, a further bedroom and separate family bathroom with shower
- uPVC double glazed windows and gas fired central heating
- Private rear garden, laid to lawn with raised paved terrace and gated access to side
- There is an additional gravelled courtyard to the front and driveway providing parking for three cars
- A very quiet and convenient location on the fringe of the town, close to plenty of local amenities including retail parks, the sports village, fitness club and bypass. The town centre is also just a ten minute drive away

Cooper Green Pooks
3 Barker Street
Shrewsbury
SY1 1QF

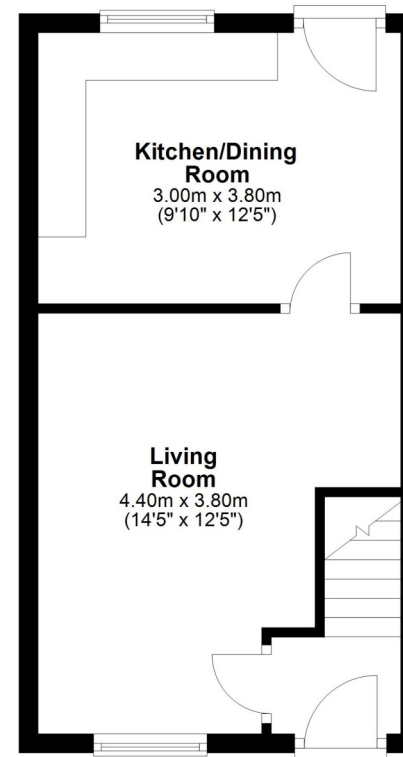
www.cgpooks.co.uk
sales@cgpooks.co.uk
01743 276666



Coopergreenpooks.co.uk

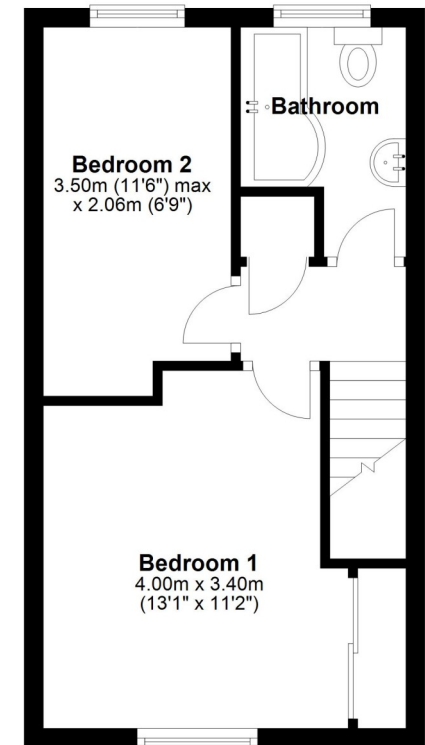
Ground Floor

Approx. 27.9 sq. metres (300.0 sq. feet)



First Floor

Approx. 27.9 sq. metres (300.0 sq. feet)



Total area: approx. 55.7 sq. metres (600.1 sq. feet)







5 Robin Close, Sundorne Grove, Shrewsbury, SY1 4TX

£190,000 Freehold — 2 bedroom end terrace

sales@cgpooks.co.uk

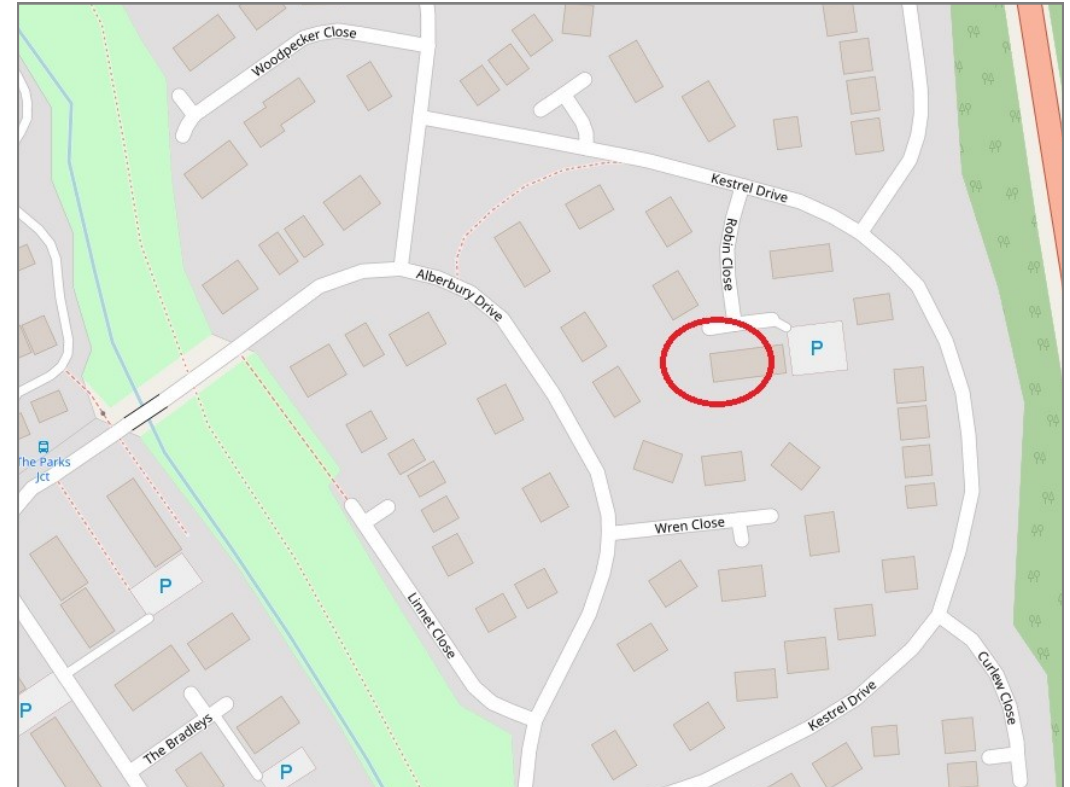
rightmove 

 OnTheMarket.com

 **RICS**
Regulated by RICS



BOUNDARIES NOT CONFIRMED



Tenure	Freehold
Local Authority	Shropshire Council
Council Tax	Band B
EPC Band	Band D
Services	All mains services are connected

 **Expert mortgage advice available**

3 Barker St, Shrewsbury SY1 1QF

Cooper Green Pooks
01743 276666



Your home may be repossessed if you do not keep up repayments on your mortgage.
There may be a fee for mortgage advice. The actual amount you pay will depend upon your circumstances. The fee is up to 1% but a typical fee is 0.3% of the amount borrowed.

5 Robin Close, Sundorne Grove, Shrewsbury, SY1 4TX

Coopergreenpooks.co.uk

£190,000 Freehold — 2 bedroom end terrace

sales@cgpooks.co.uk



IMPORTANT NOTICE: Cooper Green Pooks for themselves and for the lessors or vendors of this property whose agents they are give notice that: 1 No appliances, services or service installations have been tested and no warranty as to suitability or serviceability is implied. Any prospective purchaser or lessee is advised to obtain verification from their surveyor or solicitor. 2. The particulars are set out as a general outline only for the guidance of the intended purchasers or lessees and do not constitute, nor constitute part of, an offer or contract. 3. All descriptions, reference to condition and necessary permissions for use and occupation and other details are given in good faith and are believed to be correct but any intending purchasers or lessees should not rely on them as statements or representation of fact but satisfy themselves by inspection or otherwise as to the correctness of each of them. 4. No person in the employment of Cooper Green Pooks has any authority to make or give any representation or warranty whatsoever in relation to this property. 5. All rentals and prices are quoted exclusive of Stamp Duty, legal and surveyors fees and any other associated purchasers or lessees costs. 6. Floor plans are indicative only and should not be relied on. 7. The plan showing the boundary of the property is indicative only and has not been checked against the legal title so should not be relied on. 8. All dimensions, floor areas and site areas are only approximate and should not be relied on. Dimensions are generally maximum room dimension.